

India's Largest Manufacturers of Industrial Sewing Machines



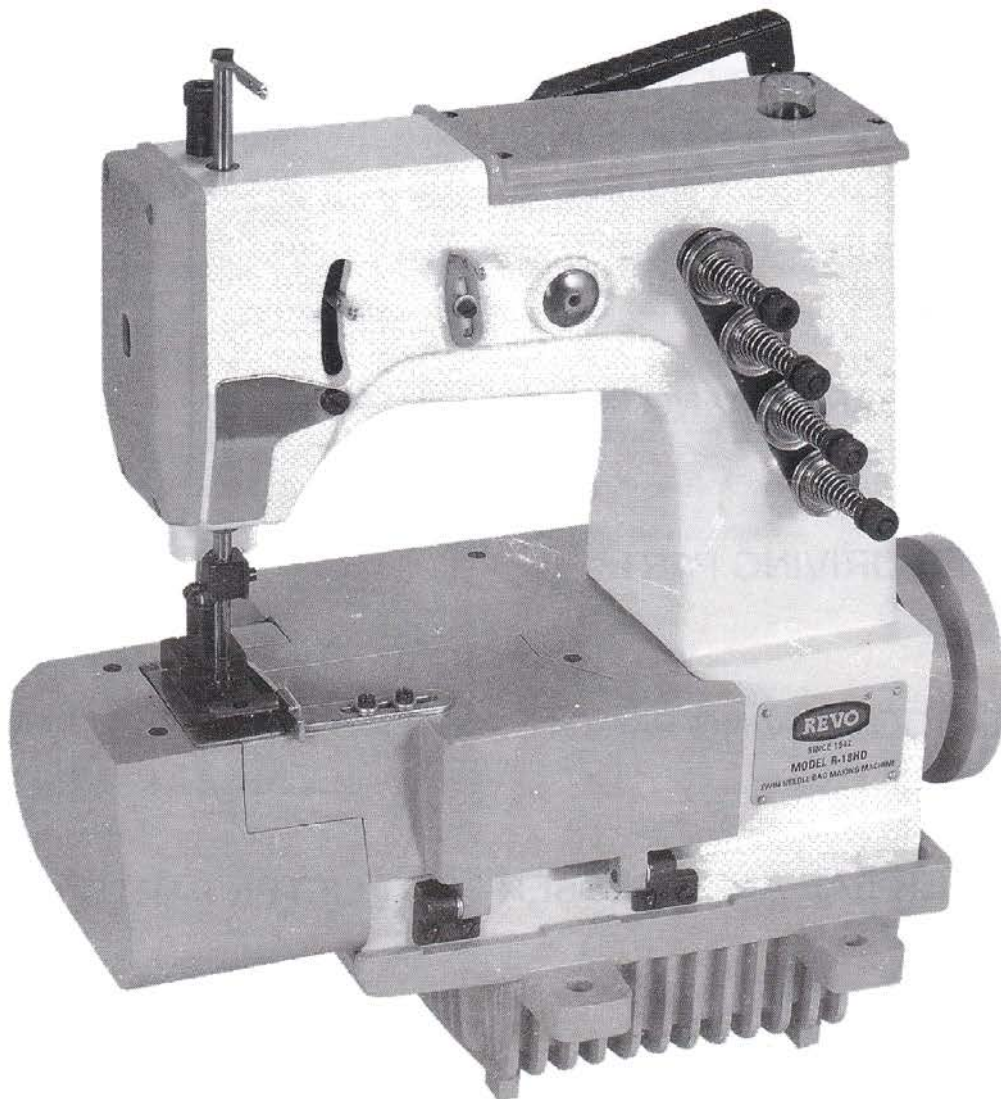
SINCE 1942

**MODEL RX-5S/D**

DIN EN ISO 9001 : 2000



Certificate Registration No.  
85 100 001 08001



**SEWING-MACHINE FOR MAKING FILLING AND DISCHARGING  
SPOUT OF (FIBC) CONTAINER BAGS**

# CONTENTS

1.	MISCELLANEOUS COVERS & BASE PARTS	1-2
2.	BUSHINGS	3-4
3.	THREAD EYELET PARTS	5-6
4.	LOOPER THREAD EYELET & THREAD GUIDE PARTS	7-8
5.	MAIN DRIVING SHAFT PARTS	9-10
6.	NEEDLE BAR DRIVING PARTS	11-14
7.	LOOPER DRIVING PARTS	15-16
8.	FEED DOG DRIVING PARTS	17-18
9.	PRESSER BAR AND PRESSER FOOT LIFTER PARTS	19-20
10.	OIL LUBRICATING PARTS	21-22
11.	THREAD STAND PARTS	23-24

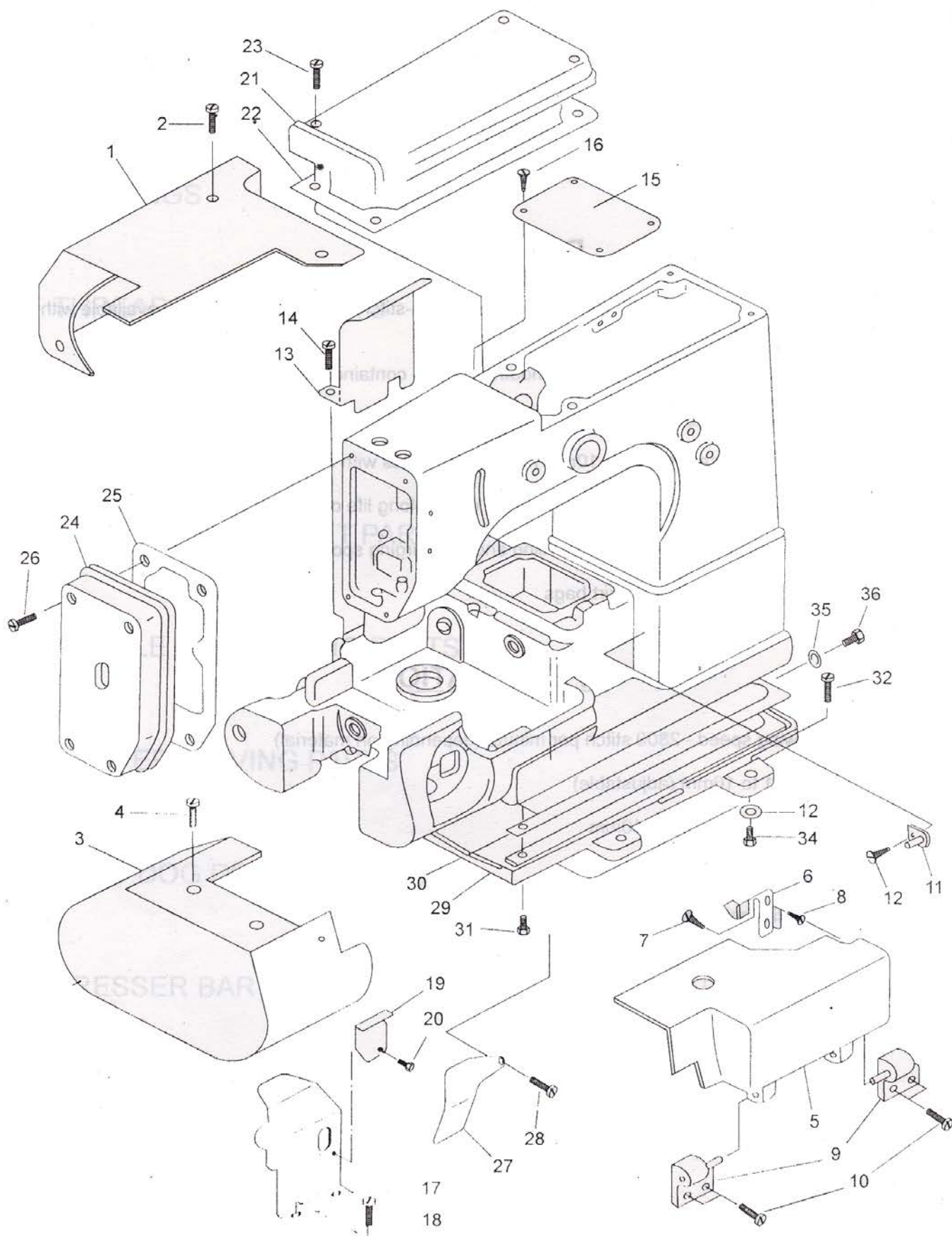
## **DESCRIPTION**

- High-Speed, Twin Needle, Four Thread, plain-feed, chain-stitch sewing machine. Also available with alternating upper feed mechanism
- Essential for sewing filling and discharge mouths of FIBC container bags
- Filler cords from top and from below can be stitched for sealing needle punctures
- High presser-foot clearance - sews 10mm material thickness with minimum effort
- Force feed gear pump lubrication of the machine ensure long life of moving parts
- Cylinder-bed allows the operator to sew filling and discharging spout to FIBC jumbo bags with ease
- Most suitable for manufacturing skirt bags

## **SPECIFICATIONS**

- Maximum sewing speed - 2800 stitch per minute (depending on material)
- Stitch length - 11 to 16mm (adjustable)
- Maximum material thickness - 10mm
- Needle - DR x 2 # 26
- Thread - Multi filament, fabricated yarn

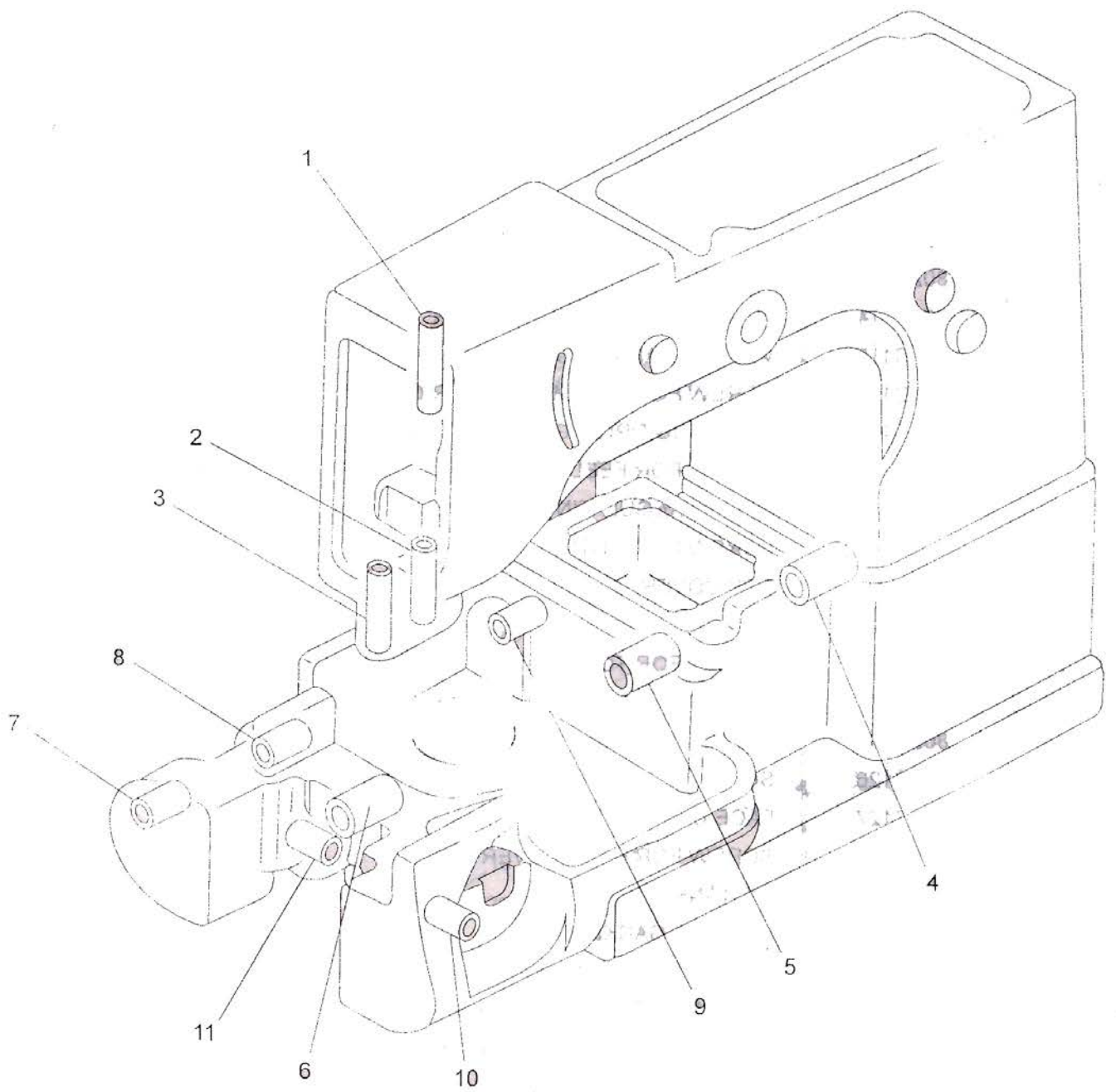
# (1) MISCELLANEOUS COVERS & BASE PARTS



## (1) MISCELLANEOUS COVERS & BASE PARTS

INDEX	PART NO.	DESCRIPTION	QNTY.
1	802C11	CLOTH PLATE	1
2	802C12	SCREW FOR CLOTH PLATE	3
3	802C13	SIDE COVER	1
4	802C14	SCREW FOR SIDE COVER	2
5	802C15	FRONT COVER	1
6	802C16	FRONT COVER LATCH SPRING	1
7	802C17	SCREW FOR FRONT COVER LATCH SPRING	2
8	802C18	NUT FOR FRONT COVER LATCH SPRING	2
9	802C19	FRONT COVER HINGE	2
10	802C110	SCREW FOR FRONT COVER HINGE	4
11	802C111	LATCH SPRING PIN	1
12	802C112	SCREW FOR LATCH SPRING PIN	1
13	802C113	FEED BAR COVER	1
14	802C114	SCREW FOR FEED BAR LEVER	2
15	802C115	WORM CHAMBER COVER	1
16	802C116	SCREW FOR WORM CHAMBER COVER	4
17	802C117	FEED DOG DRIVING ROD FRONT COVER	1
18	802C118	SCREW FOR FEED DOG DRIVING ROD FRONT COVER	2
19	802C119	STITCH REGULATING COVER	1
20	802C120	SCREW FOR STITCH REGULATING COVER	1
21	802C121	TOP COVER	1
22	802C122	TOP COVER GASKET	1
23	802C123	SCREW FOR TOP COVER	4
24	802C124	HEAD COVER	1
25	802C125	HEAD COVER GASKET	1
26	802C126	SCREW FOR HEAD COVER	4
27	802C127	FACE COVER	1
28	802C128	SCREW FOR FACE COVER	1
29	802C129	OIL TANK	1
30	802C130	OIL TANK GASKET	1
31	802C131	SCREW FOR OIL TANK	4
32	802C132	SCREW FOR MACHINE FOUNDATION	4
33	802C133	WASHER FOR MACHINE FOUNDATION	4
34	802C134	NUT FOR MACHINE FOUNDATION	4
35	802C135	WASHER FOR OIL DRAIN	1
36	802C136	SCREW FOR OIL DRAIN	1

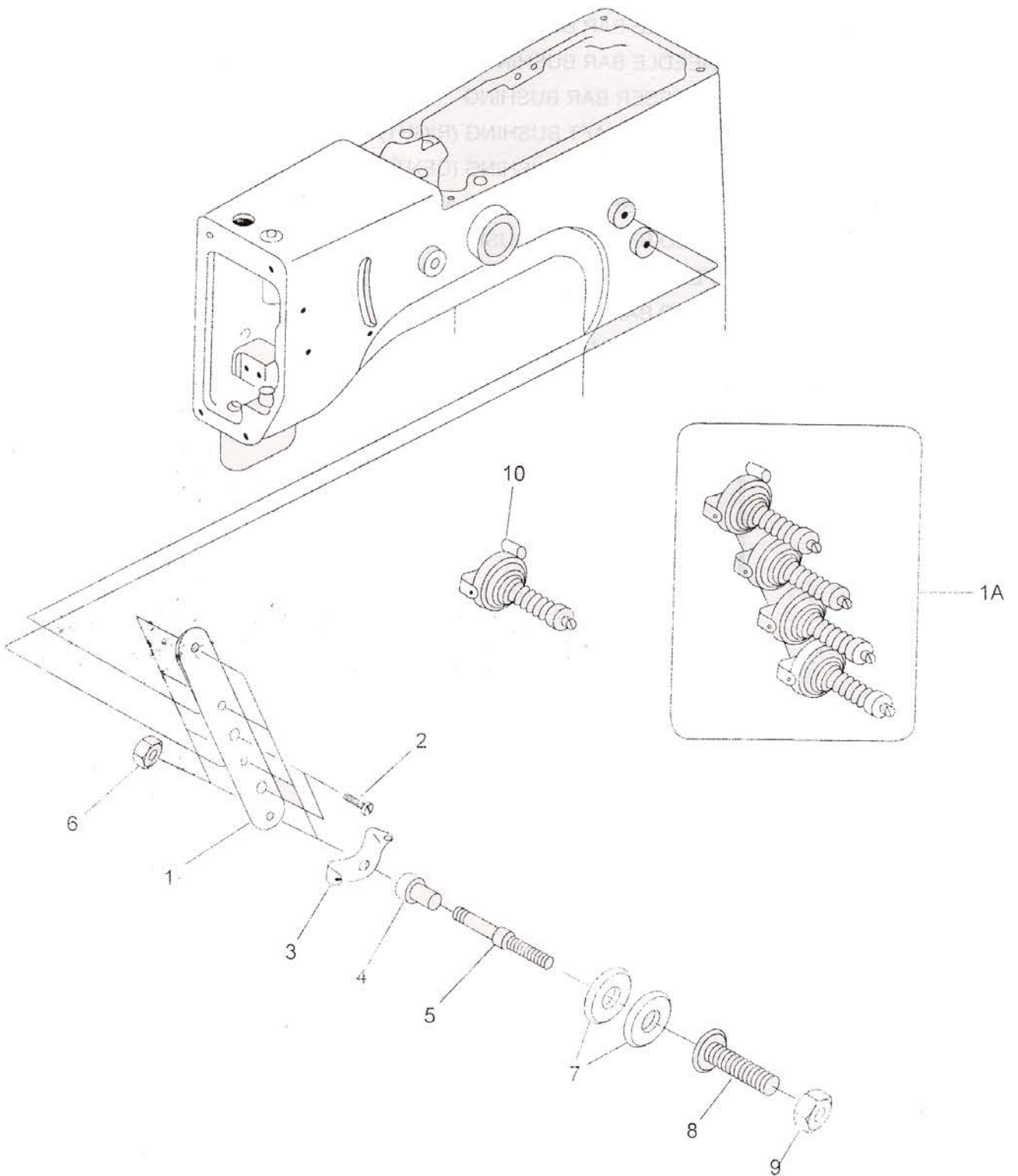
## (2) BUSHINGS



## (2) BUSHINGS

INDEX	PART NO.	DESCRIPTION	QNTY.
1	802C21	NEEDLE BAR BUSHING (UPPER)	1
2	802C22	NEEDLE BAR BUSHING (LOWER)	1
3	802C23	PRESSER BAR BUSHING	1
4	802C24	CRANK SHAFT BUSHING (RIGHT)	1
5	802C25	CRANK SHAFT BUSHING (CENTRE)	1
6	802C26	CRANK SHAFT BUSHING (LEFT)	1
7	802C27	FEED BAR SHAFT BUSH (LEFT)	1
8	802C28	FEED BAR SHAFT BUSH (CENTRE)	1
9	802C29	FEED BAR SHAFT BUSH (RIGHT)	1
10	802C210	LOOPER SHAFT BUSH (FRONT)	1
11	802C211	LOOPER SHAFT BUSH (REAR)	1

### (3) THREAD EYELET PARTS

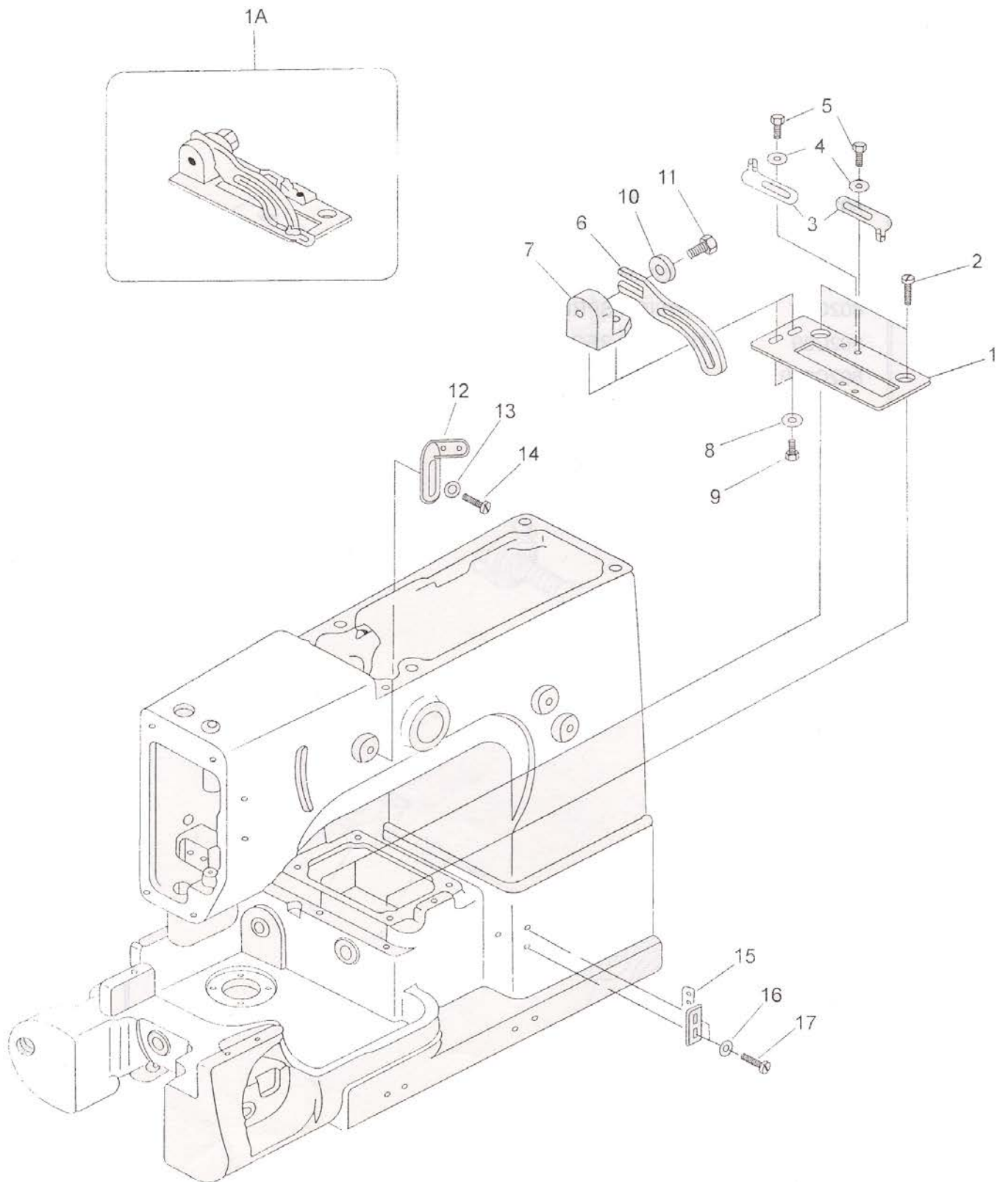




### (3) THREAD EYELET PARTS

INDEX	PART NO.	DESCRIPTION	QNTY.
1A	802C31A	TENSION UNIT COMPLETE ASSLY (1 TO 9)	1
1	802C31	TENSION DISC SEPERATOR	1
2	802C32	SCREW FOR TENSION DISC SEPERATOR	2
3	802C33	TENSION DISC EYELET	4
4	802C34	TENSION DISC BUSH	4
5	802C35	TENSION STUD	4
6	802C36	NUT FOR TENSION STUD	4
7	802C37	TENSION DISC	8
8	802C38	TENSION SPRING	4
9	802C39	TENSION REGULATING NUT	4
10	802C310	TENSION UNIT ASSLY (3 TO 9)	4
11			
12			
13			
14			
15			
16			
17			

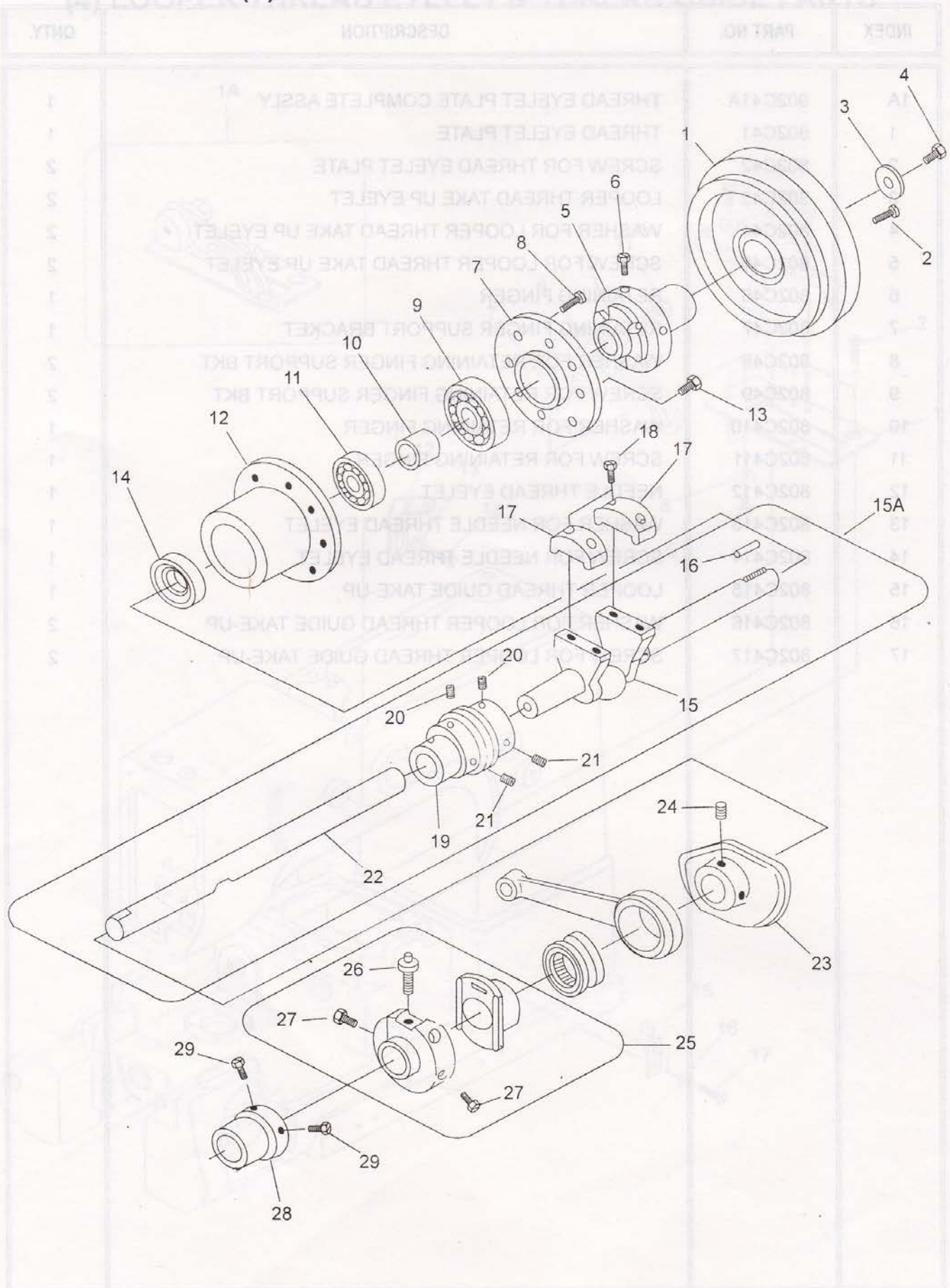
# (4) LOOPER THREAD EYELET & THREAD GUIDE PARTS



#### (4) LOOPER THREAD EYELET & THREAD GUIDE PARTS

INDEX	PART NO.	DESCRIPTION	QNTY.
1A	802C41A	THREAD EYELET PLATE COMPLETE ASSLY	1
1	802C41	THREAD EYELET PLATE	1
2	802C42	SCREW FOR THREAD EYELET PLATE	2
3	802C43	LOOPER THREAD TAKE UP EYELET	2
4	802C44	WASHER FOR LOOPER THREAD TAKE UP EYELET	2
5	802C45	SCREW FOR LOOPER THREAD TAKE UP EYELET	2
6	802C46	RETAINING FINGER	1
7	802C47	RETAINING FINGER SUPPORT BRACKET	1
8	802C48	WASHER FOR RETAINING FINGER SUPPORT BKT.	2
9	802C49	SCREW FOR RETAINING FINGER SUPPORT BKT.	2
10	802C410	WASHER FOR RETAINING FINGER	1
11	802C411	SCREW FOR RETAINING FINGER	1
12	802C412	NEEDLE THREAD EYELET	1
13	802C413	WASHER FOR NEEDLE THREAD EYELET	1
14	802C414	SCREW FOR NEEDLE THREAD EYELET	1
15	802C415	LOOPER THREAD GUIDE TAKE-UP	1
16	802C416	WASHER FOR LOOPER THREAD GUIDE TAKE-UP	2
17	802C417	SCREW FOR LOOPER THREAD GUIDE TAKE-UP	2

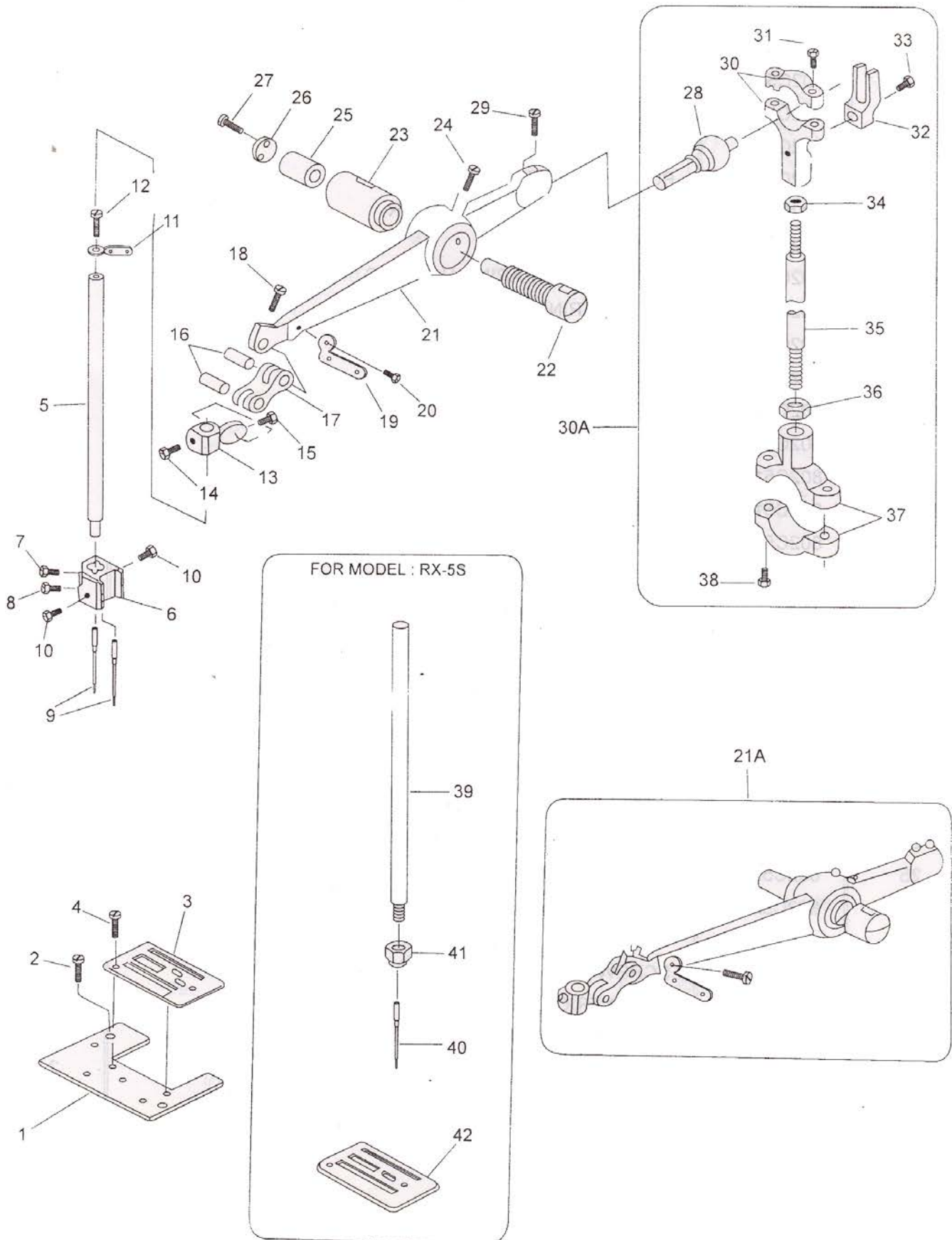
# (5) MAIN DRIVING SHAFT PARTS



## (5) MAIN DRIVING SHAFT PARTS

INDEX	PART NO.	DESCRIPTION	QNTY.
1	802C51	MACHINE PULLEY	1
2	802C52	SCREW FOR MACHINE PULLEY	4
3	802C53	PULLEY WASHER	1
4	802C54	SCREW FOR PULLEY WASHER	1
5	802C55	PULLEY HOLDER	1
6	802C56	SCREW FOR PULLEY HOLDER	2
7	802C57	BEARING COVER	1
8	802C58	SCREW FOR BEARING HOUSING	4
9	802C59	BALL BEARING (6302)	1
10	802C510	DISTANCE COLLAR	1
11	802C511	BALL BEARING (6202)	1
12	802C512	BEARING HOUSING	1
13	802C513	SCREW FOR BEARING HOUSING	4
14	802C514	OIL SEAL	1
15A	802C515A	CRANK SHAFT COMPLETE ASSEMBLY	1
15	802C515	CRANK SHAFT	1
16	802C516	KEY FOR CRANK SHAFT	1
17	802C517	COUNTER WEIGHT FOR CRANK SHAFT	2
18	802C518	SCREW FOR COUNTER WEIGHT FOR CRANK SHAFT	4
19	802C519	WORM ECCENTRIC	1
20	802C520	SCREW FOR WORM ECCENTRIC	2
21	802C521	SCREW FOR WORM ECCENTRIC	2
22	802C522	CRANK SHAFT (LEFT)	1
23	802C523	LOOPER THREAD TAKE-UP	1
24	802C524	SCREW FOR LOOPER THREAD TAKE-UP	3
25	802C525	FEED DOG REGULATING CONTROL ECCENTRIC ASSY.	1
26	802C526	SCREW FOR FEED DOG REGULATING CONTROL ECCENTRIC	1
27	802C527	SCREW FOR FEED DOG REGULATING CONTROL ECCENTRIC	2
28	802C528	FEED DOG DRIVING ECCENTRIC	1
29	802C529	SCREW FOR FEED DOG DRIVING ECCENTRIC	2
	802C630	NEEDLE LEVER CONNG. ROD BKT. (SMALL)	1
	802C631	SCREW FOR NEEDLE LEVER CONNG. ROD BKT. (SMALL)	2
	802C632	BALL STUD GUIDE	1
	802C633	SCREW FOR BALL STUD GUIDE	1

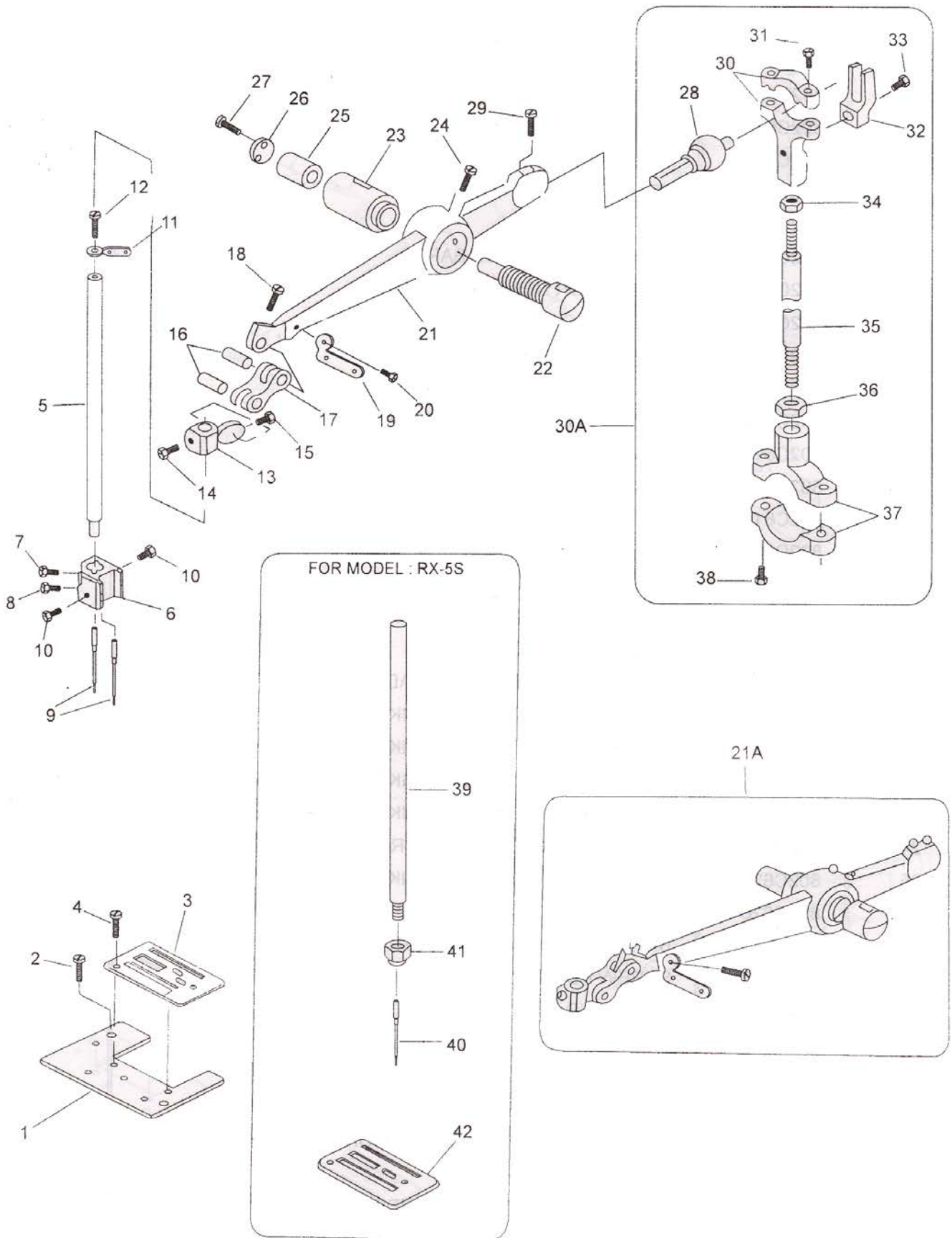
# (6) NEEDLE BAR DRIVING PARTS



## (6) NEEDLE BAR DRIVING PARTS

INDEX	PART NO.	DESCRIPTION	QNTY.
1	802C61	THROAT PLATE SUPPORTER	1
2	802C62	SCREW FOR THROAT PLATE SUPPORTER	2
3	802C63	THROAT PLATE	1
4	802C64	SCREW FOR THROAT PLATE	2
5	802C65	NEEDLE BAR	1
6	802C66	NEEDLE HOLDER	1
7	802C67	SCREW FOR NEEDLE BAR	1
8	802C68	SCREW FOR NEEDLE BAR	1
9	802C69	NEEDLE NO.(DR X 2-26)	2
10	802C610	SCREW FOR NEEDLE	2
11	802C611	NEEDLE BAR THREAD EYELET	1
12	802C612	SCREW FOR NEEDLE BAR THREAD EYELET	1
13	802C613	NEEDLE BAR CONNECTING BKT.	1
14	802C614	SCREW FOR NEEDLE BAR CONNECTING BKT.	1
15	802C615	SCREW FOR NEEDLE BAR CONNECTING LINK PIN	1
16	802C616	NEEDLE BAR CONNG. LINK PIN	2
17	802C617	NEEDLE BAR CONNG. LINK	1
18	802C618	SCREW FOR NEEDLE BAR CONNG. LINK PIN	1
19	802C619	NEEDLE THREAD TAKE-UP	1
20	802C620	SCREW FOR NEEDLE THREAD TAKE-UP	1
21A	802C621A	NEEDLE BAR DRIVING CRANK BKT. ASSLY.	1
21	802C621	NEEDLE BAR DRIVING CRANK BKT.	1
22	802C622	NEEDLE BAR DRIVING CRANK BKT.SHAFT	1
23	802C623	NEEDLE BAR DRIVING CRANK BKT. SHAFT BUSH	1
24	802C624	SCREW FOR NEEDLE BAR DRIVING CRANK BKT. SHAFT	1
25	802C625	NEEDLE BAR DRIVING CRANK BKT. SHAFT COLLAR	1
26	802C626	NEEDLE BAR DRIVING CRANK BKT. SHAFT COLLAR WASHER	1
27	802C627	SCREW FOR WASHER	3
28	802C628	BALL STUD	1
29	802C629	SCREW FOR BALL STUD	2
30A	802C630A	NEEDLE LEVER CONNG. ROD BKT. ASSLY.	1
30	802C630	NEEDLE LEVER CONNG. ROD BKT. (SMALL)	1
31	802C631	SCREW FOR NEEDLE LEVER CONNG. ROD BKT. (SMALL)	2
32	802C632	BALL STUD GUIDE	1
33	802C633	SCREW FOR BALL STUD GUIDE	1

## (6) NEEDLE BAR DRIVING PARTS

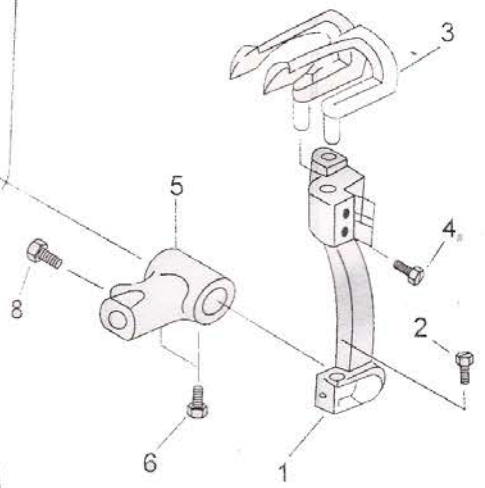
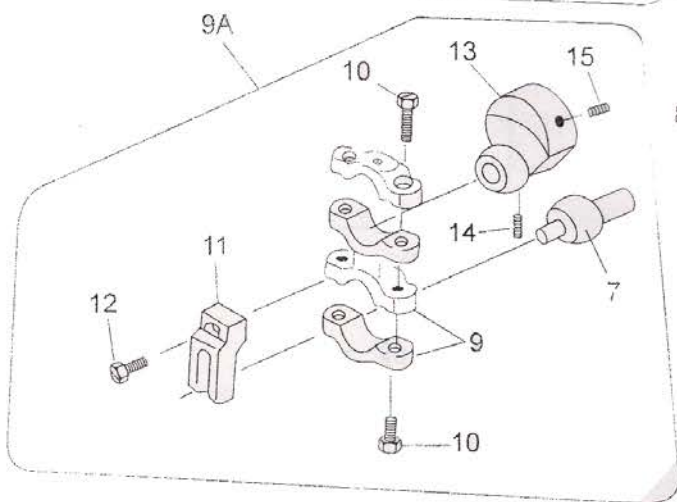
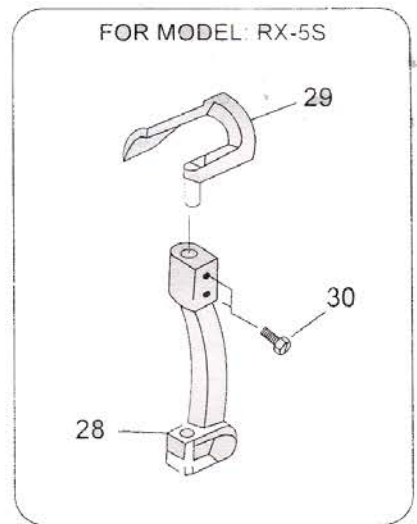
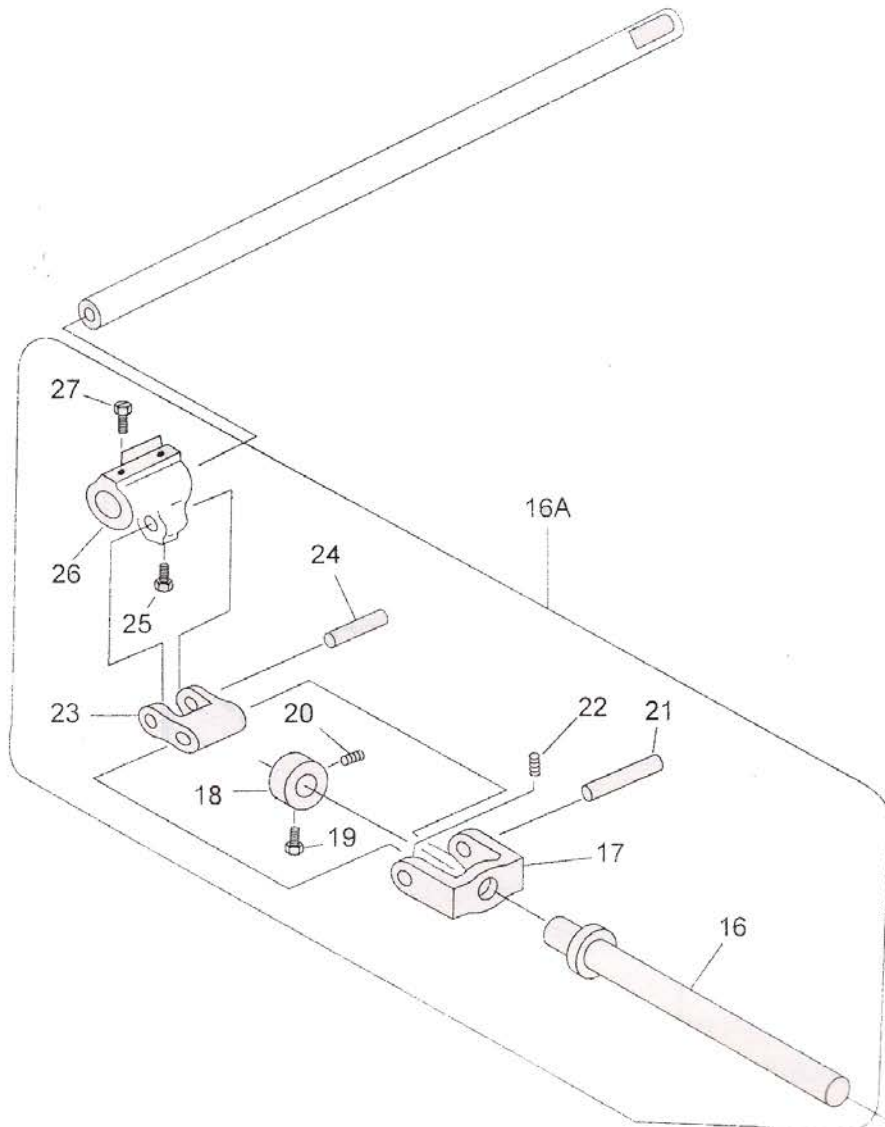




## (6) NEEDLE BAR DRIVING PARTS

INDEX	PART NO.	DESCRIPTION	QNTY.
34	802C634	NUT FOR NEEDLE LEVER CONNG. ROD BKT. (SMALL)	1
35	802C635	NEEDLE LEVER CONNG. ROD	1
36	802C636	NUT FOR NEEDLE LEVER CONNG. ROD BKT. (BIG)	1
37	802C637	NEEDLE LEVER CONNG. ROD BKT. (BIG)	1
38	802C638	SCREW FOR NEEDLE LEVER CONNG. ROD BKT. (BIG)	2
39	802C639	NEEDLE BAR (Model RX-5S)	1
40	802C640	NEEDLE (DR X :-26)	1
41	802C641	NEEDLE CLAMP NUT	1
42	802C642	THROAT PLATE (Model RX-5S)	1
	802C70		1
	802C710		1
	802C711		1
	802C712		1
	802C713		1
	802C714		1
	802C715		1
	802C715A		1
	802C716		1
	802C717		1
	802C718		1
	802C719		1
	802C720		1
	802C721		1
	802C722		2
	802C723		1
	802C724		1
	802C725		1
	802C726		1
	802C727 a		2
	802C728		1
	802C729		1
	802C730		2

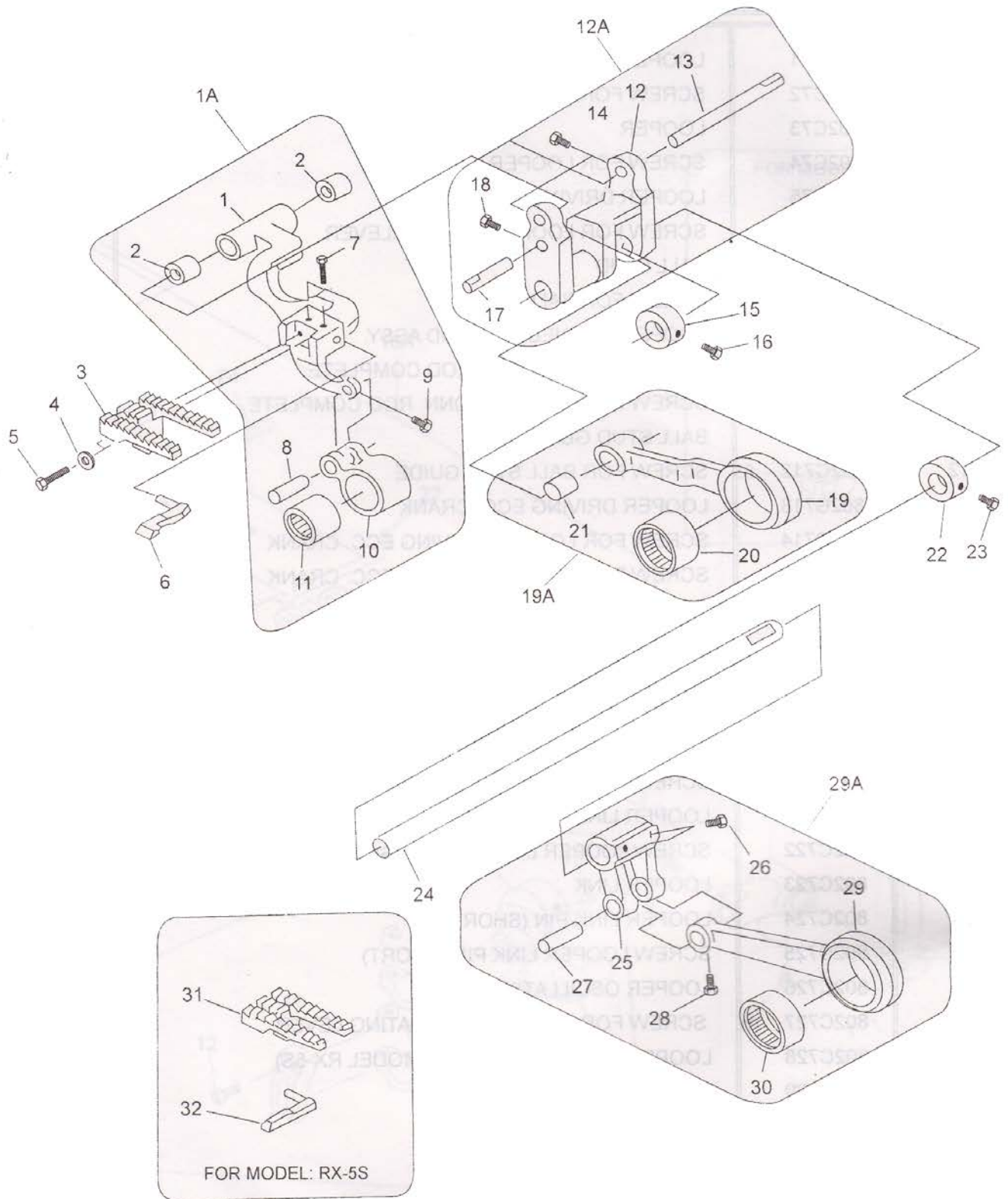
# (7) LOOPER DRIVING PARTS



## (7) LOOPER DRIVING PARTS

INDEX	PART NO.	DESCRIPTION	QNTY.
1	802C71	LOOPER HOLDER BRACKET	1
2	802C72	SCREW FOR LOOPER HOLDER BRACKET	2
3	802C73	LOOPER	2
4	802C74	SCREW FOR LOOPER	4
5	802C75	LOOPER DRIVING LEVER	1
6	802C76	SCREW FOR LOOPER DRIVING LEVER	2
7	802C77	BALL STUD	1
8	802C78	SCREW FOR BALL STUD	1
9A	802C79A	LOOPER CONNECTING ROD ASSY.	1
9	802C79	LOOPER CONNECTING ROD COMPLETE	1
10	802C710	SCREW FOR LOOPER CONN. ROD COMPLETE	4
11	802C711	BALL STUD GUIDE	1
12	802C712	SCREW FOR BALL STUD GUIDE	1
13	802C713	LOOPER DRIVING ECC. CRANK	1
14	802C714	SCREW FOR LOOPER DRIVING ECC. CRANK	1
15	802C715	SCREW FOR LOOPER DRIVING ECC. CRANK	1
16A	802C716A	LOOPER DRIVING SHAFT ASSY	1
16	802C716	LOOPER DRIVING SHAFT	1
17	802C717	LOOPER LINK HOLDER	1
18	802C718	LOOPER DRIVING SHAFT COLLAR	1
19	802C719	SCREW FOR LOOPER DRIVING SHAFT COLLAR	1
20	802C720	SCREW FOR LOOPER DRIVING SHAFT COLLAR	1
21	802C721	LOOPER LINK PIN (LONG)	1
22	802C722	SCREW LOOPER LINK PIN (LONG)	2
23	802C723	LOOPER LINK	1
24	802C724	LOOPER LINK PIN (SHORT)	1
25	802C725	SCREW LOOPER LINK PIN (SHORT)	1
26	802C726	LOOPER OSCILLATING LEVER	1
27	802C727	SCREW FOR LOOPER OSCILLATING LEVER	2
28	802C728	LOOPER HOLDER BRACKET (MODEL RX-5S)	1
29	802C729	LOOPER (FOR RX-5S)	1
30	802C730	SCREW FOR LOOPER (RX-5S)	2

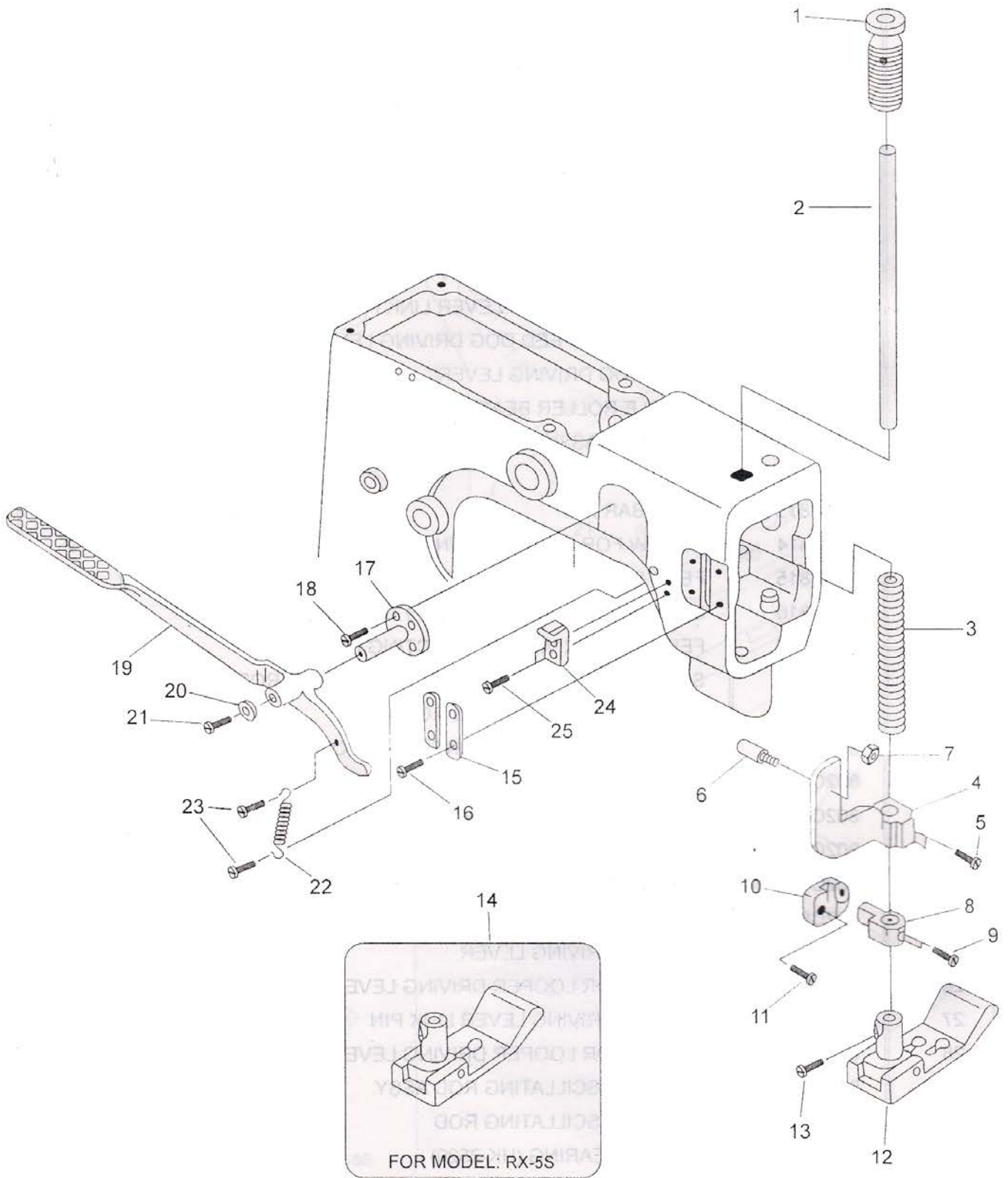
# (8) FEED DOG DRIVING PARTS



## (8) FEED DOG DRIVING PARTS

INDEX	PART NO.	DESCRIPTION	QNTY.
1A	802C81A	FEED BAR BRACKET ASSY.	1
1	802C81	FEED BAR BRACKET	1
2	802C82	NEEDLE ROLLER BEARING (SCE-610)	2
3	802C83	FEED DOG	1
4	802C84	WASHER FOR FEED DOG	2
5	802C85	SCREW FOR FEED DOG	2
6	802C86	NEEDLE SUPPORT	1
7	802C87	SCREW FOR NEEDLE SUPPORT	2
8	802C88	FEED DOG DRIVING LEVER LINK PIN	1
9	802C89	SCREW FOR FEED DOG DRIVING LEVER LINK PIN	1
10	802C810	FEED DOG DRIVING LEVER	1
11	802C811	NEEDLE ROLLER BEARING (NK-20122R)	1
12A	802C812A	FEED BAR ASSY.	1
12	802C812	FEED BAR	1
13	802C813	FEED BAR PIN	1
14	802C814	SCREW FOR FEED BAR PIN	2
15	802C815	FEED BAR SHAFT COLLAR (LEFT)	1
16	802C816	SCREW FOR FEED BAR SHAFT COLLAR (LEFT)	2
17	802C817	FEED DOG DRIVING CONNECTING ROD PIN	1
18	802C818	SCREW FEED DOG DRIVING CONNECTING ROD PIN	1
19A	802C819A	FEED DOG CONNECTING ROD ASSY.	1
19	802C819	FEED DOG DRIVING CONNECTING ROD	1
20	802C820	NEEDLE BEARING (RNA-4903)	1
21	802C821	NEEDLE BEARING (SCE-610)	1
22	802C822	FEED BAR SHAFT COLLAR (RIGHT)	1
23	802C823	SCREW FOR FEED BAR SHAFT COLLAR (RIGHT)	2
24	802C824	FEED BAR SHAFT	1
25	802C825	LOOPER DRIVING LEVER	1
26	802C826	SCREW FOR LOOPER DRIVING LEVER	2
27	802C827	LOOPER DRIVING LEVER LINK PIN	1
28	802C828	SCREW FOR LOOPER DRIVING LEVER LINK PIN	1
29A	802C829A	LOOPER OSCILLATING ROD ASSY.	1
29	802C829	LOOPER OSCILLATING ROD	1
30	802C830	NEEDLE BEARING (HK-2520)	1
31	802C831	FEED DOG (FOR RX-5S)	1
32	802C832	NEEDLE SUPPORT (FOR RX-5S)	1

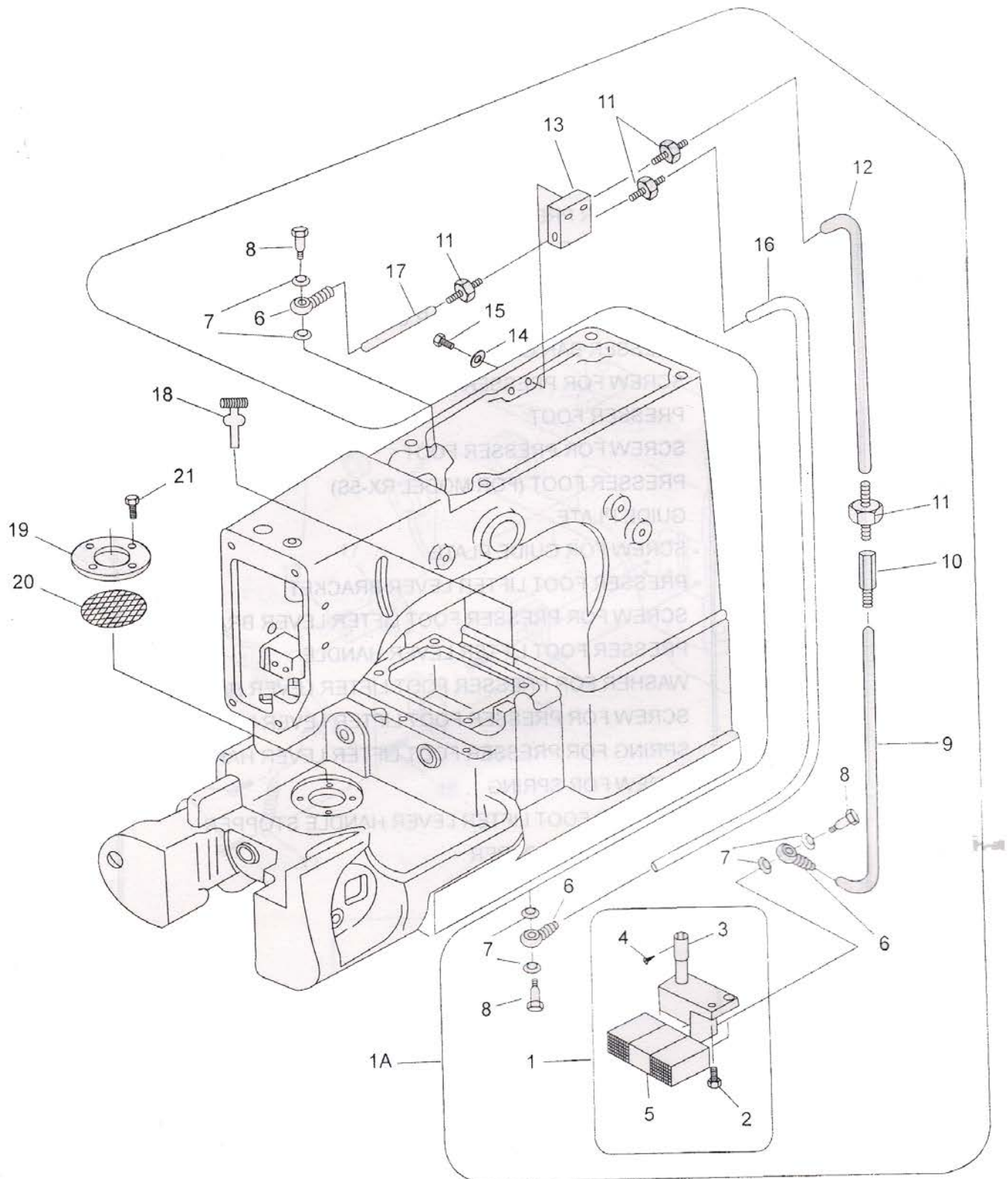
# (9) PRESSER BAR AND PRESSER FOOT LIFTER PARTS



## (9) PRESSER BAR AND PRESSER FOOT LIFTER PARTS

INDEX	PART NO.	DESCRIPTION	QNTY.
1	802C91	PRESSER BAR REGULATING KNOB	1
2	802C92	PRESSER BAR	1
3	802C93	PRESSER BAR SPRING	1
4	802C94	PRESSER BAR LIFTER BRACKET	1
5	802C95	SCREW FOR PRESSER BAR LIFTER BRACKET	2
6	802C96	STUD FOR PRESSER BAR LIFTER BRACKET	1
7	802C97	NUT FOR STUD	1
8	802C98	PRESSER BAR CONN. BRACKET	1
9	802C99	SCREW FOR PRESSER BAR CONN. BRACKET	2
10	802C910	PRESSER BAR GUIDE	1
11	802C911	SCREW FOR PRESSER BAR GUIDE	2
12	802C912	PRESSER FOOT	1
13	802C913	SCREW FOR PRESSER FOOT	1
14	802C914	PRESSER FOOT (FOR MODEL RX-5S)	1
15	802C915	GUIDE PLATE	2
16	802C916	SCREW FOR GUIDE PLATE	4
17	802C917	PRESSER FOOT LIFTER LEVER BRACKET	1
18	802C918	SCREW FOR PRESSER FOOT LIFTER LEVER BRACKET	4
19	802C919	PRESSER FOOT LIFTER LEVER HANDLE	1
20	802C920	WASHER FOR PRESSER FOOT LIFTER LEVER HANDLE	1
21	802C921	SCREW FOR PRESSER FOOT LIFTER LEVER HANDLE	1
22	802C922	SPRING FOR PRESSER FOOT LIFTER LEVER HANDLE	1
23	802C923	SCREW FOR SPRING	2
24	802C924	PRESSER FOOT LIFTER LEVER HANDLE STOPPER	1
25	802C925	SCREW FOR STOPPER	2

# (10) OIL LUBRICATING PARTS

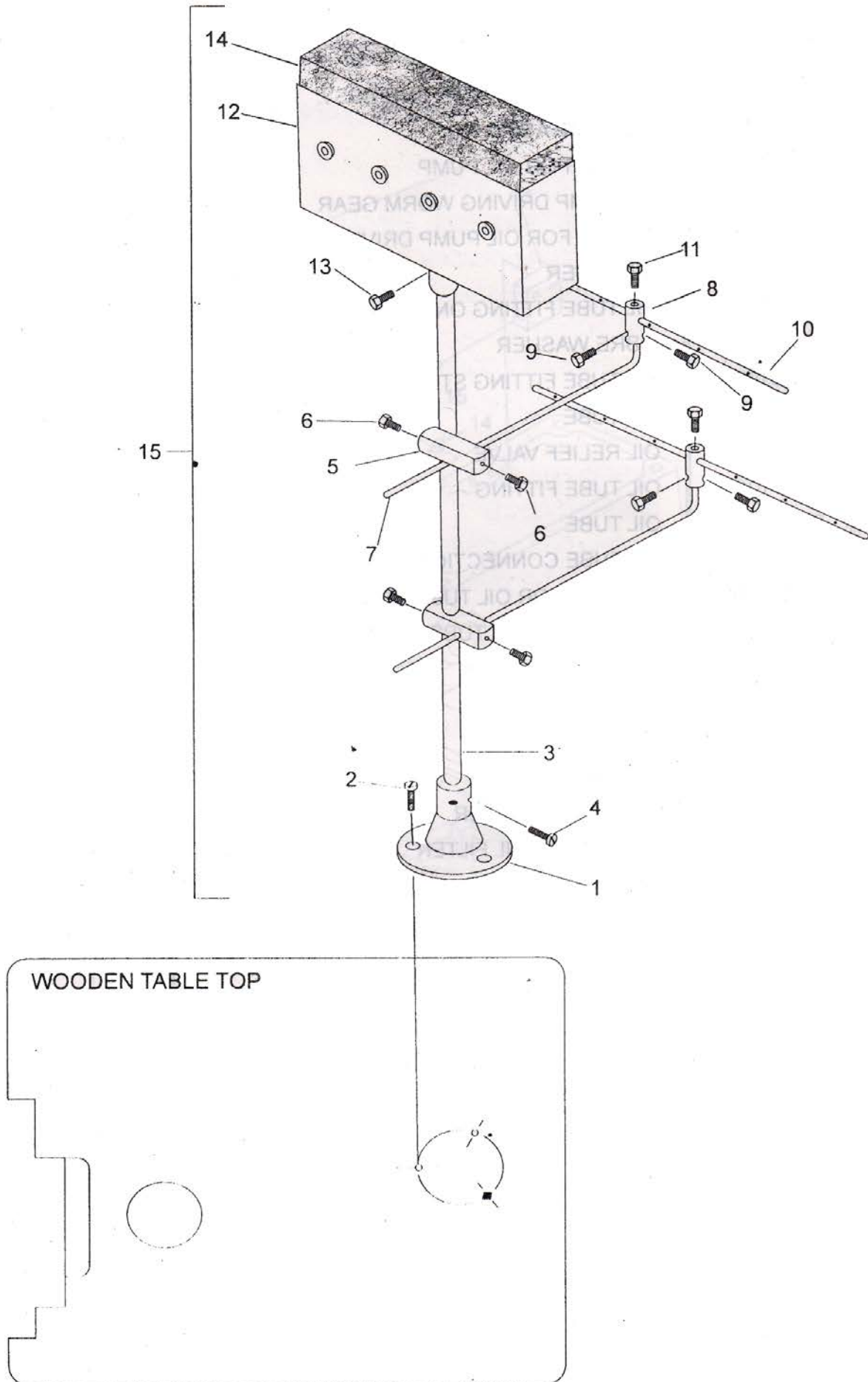




### (10) OIL LUBRICATING PARTS

INDEX	PART NO.	DESCRIPTION	QNTY.
1A	802C101A	LUBRICATING PARTS UNIT ASSY.	1
1	802C101	OIL PUMP ASSY.	1
2	802C102	SCREW FOR OIL PUMP	2
3	802C103	OIL PUMP DRIVING WORM GEAR	1
4	802C104	SCREW FOR OIL PUMP DRIVING WORM GEAR	2
5	802C105	OIL FILTER	1
6	802C106	OIL TUBE FITTING ONE WAY END	3
7	802C107	FIBRE WASHER	6
8	802C108	OIL TUBE FITTING STUD	3
9	802C109	OIL TUBE	1
10	802C1010	OIL RELIEF VALVE	1
11	802C1011	OIL TUBE FITTING	4
12	802C1012	OIL TUBE	1
13	802C1013	OIL TUBE CONNECTION	1
14	802C1014	WASHER FOR OIL TUBE CONNECTION	2
15	802C1015	SCREW FOR OIL TUBE CONNECTION	2
16	802C1016	OIL TUBE	1
17	802C1017	OIL TUBE	1
18	802C1018	OIL LEVER GUAGE	1
19	802C1019	OIL FILTER RING	1
20	802C1020	NET FOR OIL FILTER	1
21	802C1021	SCREW FOR OIL FILTER	4

# (11) THREAD STAND PARTS



## (11) THREAD STAND PARTS

INDEX	PART NO.	DESCRIPTION	QNTY.
1	802C111	THREAD STAND BASE	1
2	802C112	SCREW FOR THREAD STAND BASE	3
3	802C113	MAIN ROD	1
4	802C114	SCREW FOR MAIN ROD	2
5	802C115	THREAD GUIDE HOLDER	2
6	802C116	SCREW FOR THREAD GUIDE HOLDER	4
7	802C117	THREAD GUIDE BAR (L-TYPE)	2
8	802C118	THREAD GUIDE BAR BRACKET	2
9	802C119	SCREW FOR THREAD GUIDE BAR	4
10	802C1110	THREAD GUIDE (BIG)	2
11	802C1111	SCREW FOR THREAD GUIDE (BIG)	2
12	802C1112	THREAD LUBRICATION BOX	1
13	802C1113	SCREW FOR THREAD LUBRICATION BOX	2
14	802C1114	"U" FORM	1
15	802C1115	THREAD GUIDE STAND COMPLETE SET	1



SINCE 1942

## **SWARUP MECHANICAL WORKS**

**AN ISO 9001 : 2000 CERTIFIED COMPANY**

OFF. & FAC. UNIT-I : OVERLOCK BUILDING, OVERLOCK ROAD, LUDHIANA-141 003. (INDIA)

TELEPHONE : 91-161-2530774, 2546030. FAX : 91-161-2533751. GRAMS : OVERLOCK

FACTORY - UNIT II : B-XXX-69, KAILASH NAGAR, SHERPUR BYE-PASS,

LUDHIANA-141 003. (INDIA) TELEPHONE : 2546031, 2672174

INTERNET : [www.revoindia.com](http://www.revoindia.com) [www.sewingnet.com](http://www.sewingnet.com) E-MAIL : [sales@revoindia.com](mailto:sales@revoindia.com)